



GENERAL CARGO 4400

SPECIFICATION

PRINCIPAL DIMENSIONS

Length o.a.	93.50	m
Length p.p.	91.70	m
Breadth (moulded)	14.40	m
Depth	7.10	m
Drafft (summer)	5.18	m
Deadweight (summer)	4,400	ton
Airdraft ballast condition	18.00	m
Tonnage	2,987	GT
	1,415	NT

Cargo Holds

One hold, completely box-shaped.

Pontoon-type hatch covers handled with a gantry crane, Mac Gregor.

Hold volume (grain=bale)	5,444	m ³
	192,253	cuft
Hatch: LxB	61.60 x 11.80	m
Hold height	7.49	m
Tank top load	15	t/m ²
Hatch cover load	2	t/m ²
Containers in hold	80	TEU
Containers on hatches	48	TEU

Capacities

Marine Gas Oil	205	m ³
Ballast water	2,100	m ³
Fresh water	54	m ³
Lubrication Oil	18	m ³

Propulsion / Maneuvering

Main engine - Hanshin LH28LRG	1,176	kW
Main engine rpm	395	rpm
Reduction gearbox	1 : 1.692	
Propeller fixed pitch	Ø 2.73	m
Propeller rpm	233	rpm
Speed at 85% MCR on design drafft	10.0	knots
Cruising range	7,870	nm
Bow thruster, tunnel type / VFD	215	KW
Rudder fishtail type		

Electrical Installation

Main power supply 440 Volt at 60 Hz.		
Three Baudoin 6M16S each	208	kWe
Emergency / harbor genset		
One Boudouin 6W105ES	136	kWe

Air-conditioning / ventilation

Mechanical hold ventilation,

6 air changes per hour.

Central AC unit for accommodation.

Accomodation

Modern and attractive accommodation

with cabins for 10 persons.

Nautical / Communication

All modern communication and

navigation aids

Fully ECDIS

GMDSS A3

Deck / Life saving equipment

Two VFD electric combined windlass forward.

One VFD electric mooring winch stern.

One free fall life boat with recovery davit.

Two liferafts.

One rescue boat with davit.

Classification

RINA

I, ⚡ HULL, ⚡ MACH, General Cargo Ship

Unrestricted navigation

Heavy cargo Tanktop 15 t/m²]

Equipped for the carriage of containers

Occasional dry bulk cargo

AUT-UMS, MON-SHAFT

INWATER SURVEY, GREEN PASSPORT

Grain fitted

Dangerous Goods Fitted

FeSi fitted

Speed & Consumption

About 10 knots laden at about 4,2 mts MGO

About 10 knots ballast at about 4 mts MGO

Other

Two grain bulkheads 12 positions

CO₂ fire extinguishing system in hold.

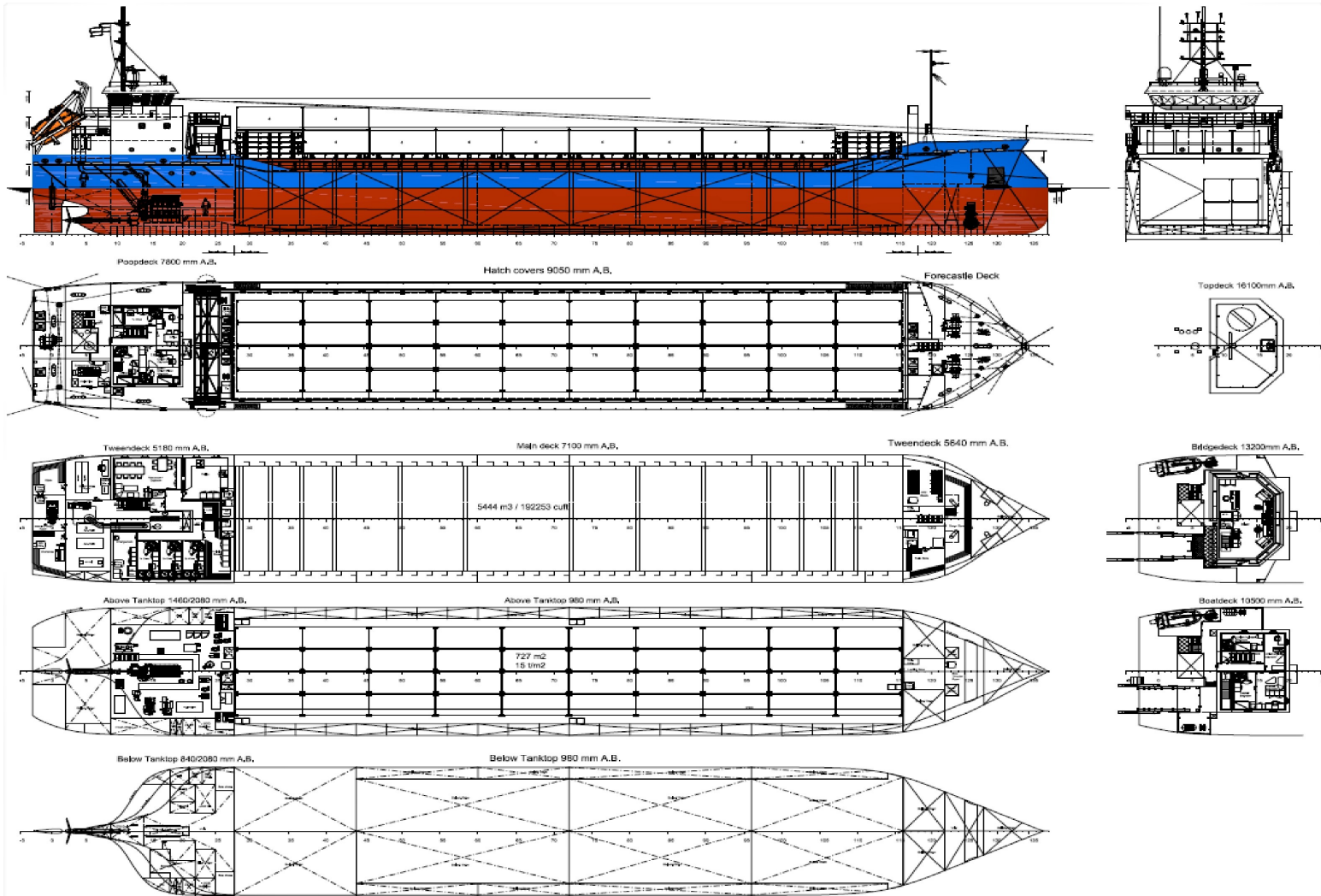
Engine room with CO₂ and water mist system.

Water Ballast Treatment system.

Gedung Kopi Lt.5
Jl. Kopi No. 25 RT. 007 RW. 005
Roa Malaka Kec. Tambora, Jakarta Barat
DKI Jakarta 11230
Indonesia
021 - 22692088

info@eurasia.id

GENERAL CARGO 4400



Gedung Kopi Lt.5
Jl. Kopi No. 25 RT. 007 RW. 005
Roa Malaka Kec. Tambora, Jakarta Barat
DKI Jakarta 11230
Indonesia
021 - 22692088

info@eurasia.id